

# DUTCH STAR

2016 DIESEL MOTOR COACH



WHEN YOU KNOW THE DIFFERENCE <sup>SM</sup>





## MATT MILLER

*President, Newmar Corporation*

“As President, I want our customers to know how passionate we are about the RV lifestyle. To us, it’s more than our business – it’s our passion. I myself am proud to own a Dutch Star built by people who have spent an average of 13 years with Newmar. People who demonstrate their commitment to industry-leading service and quality time and time again. Without them, The Newmar Difference simply wouldn’t exist.”

## BUILT TO A HIGHER STANDARD

As one of the industry’s most iconic names, the legendary Dutch Star is in a league of its own. Combining high-end luxury features, breathtaking exterior styling, ample power and a wide variety of floor plan options, Dutch Star has remained one of North America’s best-selling diesel coaches year after year.

The 2016 Dutch Star is engineered to outperform and outdeliver every other motor coach in its class. More Floor brings full tile flooring to the flat-floor slide outs in the kitchen, living area and master bedroom. The all-new STAR Foundation adds strength and support to an already stout Freightliner® chassis. Finally, Dutch Star boasts Newmar’s Cathedral Ceiling, which adds six inches of additional headroom in the rear master bath.



Dutch Star



# DUTCH STAR

YOUR EVERY WISH, GRANTED

Redesigned Flexsteel® furniture featuring Strada leather by Ultrafabrics®

New Cathedral Ceiling featured on select bath-and-a-half models

10 unique floor plans, including a wheelchair-accessible layout

Comfort Drive™ Steering System featuring Passive Steer technology



WHEN YOU KNOW THE DIFFERENCE <sup>SM</sup>









Prism Décor With Sable Maple Cabinetry - Floor Plan 4369



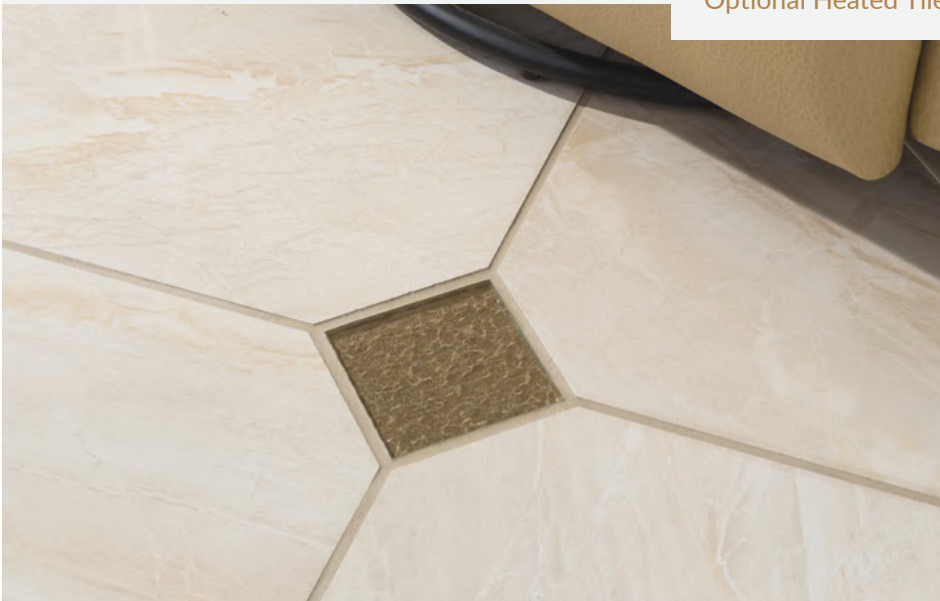
## ENTER YOUR COMFORT ZONE

Up front, an all-new 6-speaker JBL® premium cockpit audio system is custom-tuned to deliver an incredible sound experience. Steps away, an 84" Flexsteel® Hide-a-Bed sofa with Televator® and Euro-booth dinette combine with a 48" Sony® LED TV with surround sound. It's everything you need to sit back, relax and enjoy the show.

JBL



Optional Heated Tile







Euro-Booth Dinette with Integrated Storage Drawers





Polished Solid-Surface Countertops with Sable Maple Cabinetry





## A MOST TASTEFUL RETREAT

The 2016 Dutch Star is far from vanilla, providing you with a galley full of flavor and detail. Stainless steel appliances – including an available Whirlpool® refrigerator and dishwasher – bring you residential-quality convenience, while an expansive wood pantry and pull-out cabinet help keep kitchen clutter to a minimum.

Showcasing a refined sense of style, Dutch Star's two-tone tapered glass mosaic backsplash and accented solid surface countertops are the perfect complement to new 18"x18" diagonal tile flooring that expands into all flat-floor slide outs.

Glass Mosaic Backsplash







King Bed with New Prism Décor on Custom Bedspread



Hardwood Bureau Cabinets with 32" Sony® LED TV



## EXPERIENCE THE STAR TREATMENT

An irresistible setting for quality rest and relaxation, the 2016 Dutch Star's master bedroom is every bit a serene oasis. Adjustable LED lighting illuminates the all-new Prism décor, while a custom bedspread, accent pillows and carved hardwood headboard adorn a King bed with plush pillow-top mattress.

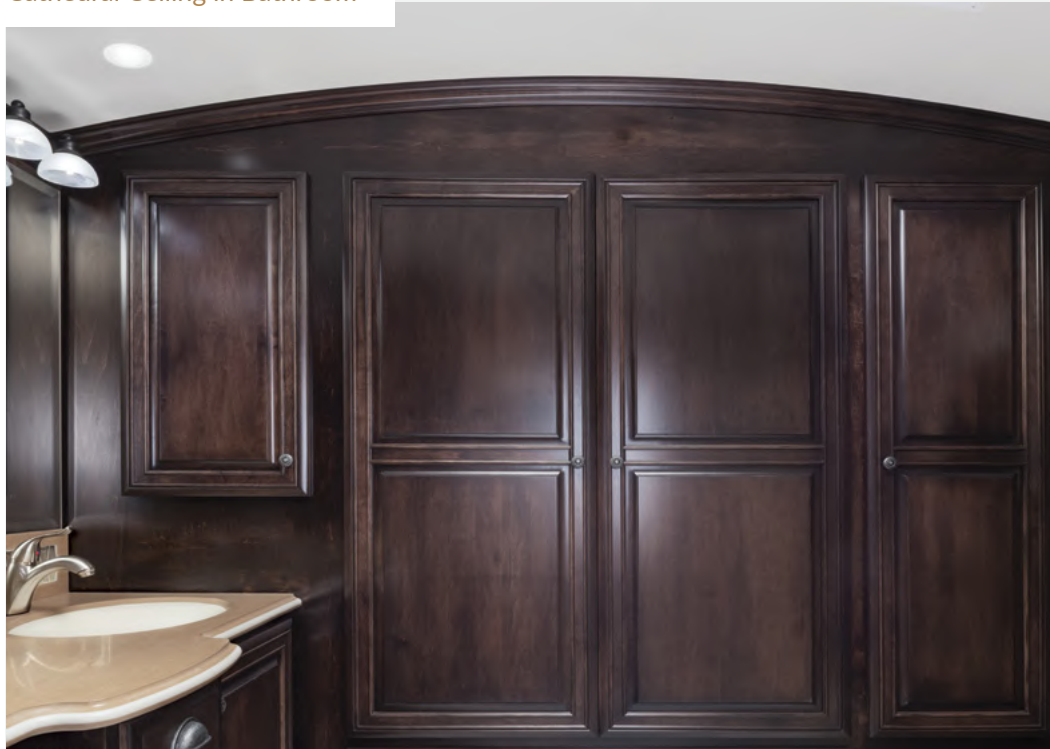


Carved Hardwood Headboard with Accent Pillows

You'll find room for your Sunday best and much more inside a sizable wardrobe that features a new Sable Maple wood finish and plenty of lighting throughout. Should you seek a bit of entertainment before drifting off to sleep, turn to the 32" Sony® LED TV with Blu-ray player for a mesmerizing, crystal-clear escape.

**SONY®**

Cathedral Ceiling in Bathroom



## THE DIFFERENCE IS IN THE DETAILS

Dutch Star is a place where gorgeous form meets incredible function, beginning with the new Cathedral Ceiling. An engineering marvel, Cathedral Ceiling creates an additional six inches of headroom in the rear master bath despite being nearly invisible from the outside.\* Down the hall, a mid-cabin half-bath is designed to accommodate each of your guests.\*\*

Speaking of accommodations, every Dutch Star master bathroom features a stylish new faucet and polished solid-surface countertop, while select floor plans offer his and hers medicine cabinets and a twin-sink vanity. A full-glass shower comes decorated with maintenance-free Sentrel™ acrylic walls and an optional fold-down teak hardwood shower seat.

*\*Cathedral Ceiling not available with floor plan 4312*

*\*\*Mid-cabin half-bath available with select floor plans*



Mid-Cabin Half-Bath





Polished Solid-Surface Twin-Sink Vanity



Full-Glass Shower with Optional Fold-Down Seat



## ACCESSIBILITY WITHOUT COMPROMISE

Newmar's latest wheelchair-accessible floor plan, Dutch Star 4311\* features a remote-controlled BraunAbility® lift and access door, extra-wide aisles throughout, a power-adjustable dining room table, spacious master bath with roll-in shower – and that's just the beginning.

*\*2015 Toffee décor shown*



Power-Adjustable Table

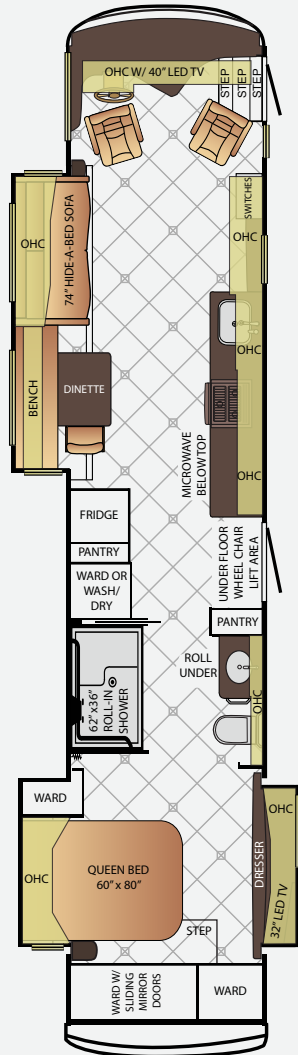






Extra-Wide Aisleway from Front to Back





## 4311

App. Overall Length	43'9"
Width	101.5"
App. Overall Height	13'0"
Interior Width	95.5"
Interior Height	84"
Grey Tank	65 gal.
Sewage Tank	45 gal.
Water Tank	105 gal.
Propane Tank	22 gal.
Furnace	50,000 btu



Remote-Control Lift with Access Door



## THE BEST MADE BETTER

Visually striking, Dutch Star's exterior has much to offer even the most discerning RVers. Complete with a wind sensor, remote control and LED lighting, the Girard® power side awning acts as the perfect cover for a newly available hammock. Meanwhile, an optional sidewall entertainment center packs a 40" Sony® LED TV with soundbar.

Built on a Freightliner® tag axle chassis featuring an HWH® hydraulic leveling system, Dutch Star is further solidified by Newmar's all-new STAR Foundation, a groundbreaking steel superstructure that is added to the chassis for enhanced durability. Equipped with Newmar's Comfort Drive™ Steering System with Passive Steer technology, the 2016 Dutch Star is unlike any motor coach you've ever driven.





## EXTERIOR DÉCOR



CANNES EXTERIOR

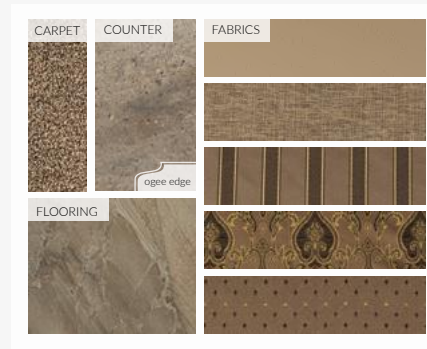


MARITIME EXTERIOR

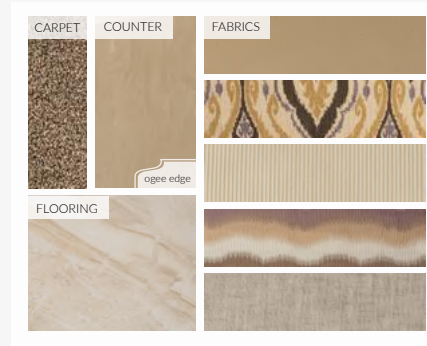


NIGHT SKY EXTERIOR

## INTERIOR DÉCOR



CORDOVA INTERIOR



PRISM INTERIOR



ABYSS INTERIOR

## WOOD OPTIONS



CARMEL GLAZED CHERRY



WICKER GLAZED MAPLE



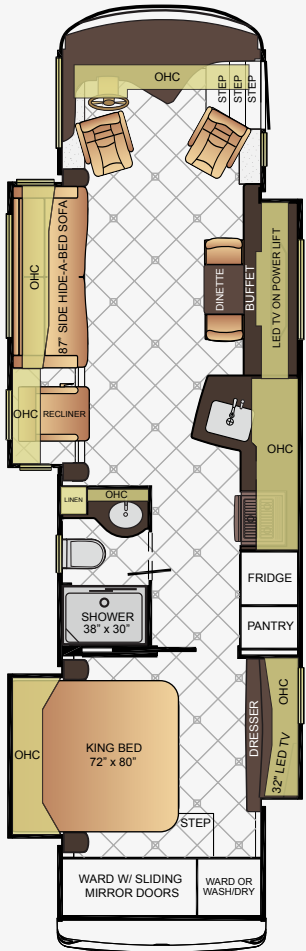
MANHATTAN GLAZED MAPLE



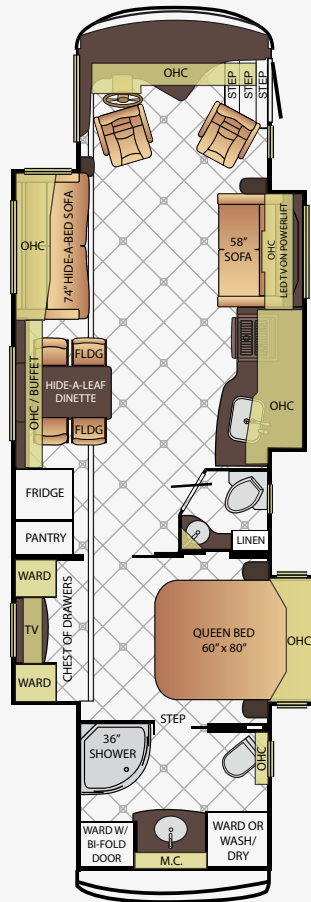
SABLE MAPLE



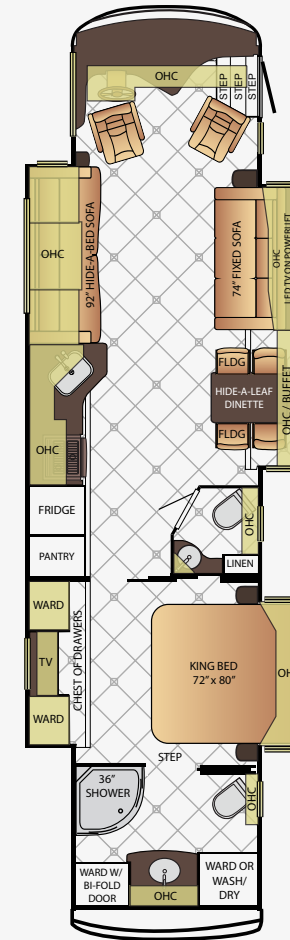
# FLOOR PLANS



App. Overall Length	37'11"
Width	101.5"
App. Overall Height	12'10"
Interior Width	95.5"
Interior Height	84"
Grey Tank	65 gal.
Sewage Tank	45 gal.
Water Tank	105 gal.
Propane Tank	22 gal.
Furnace	50,000 btu

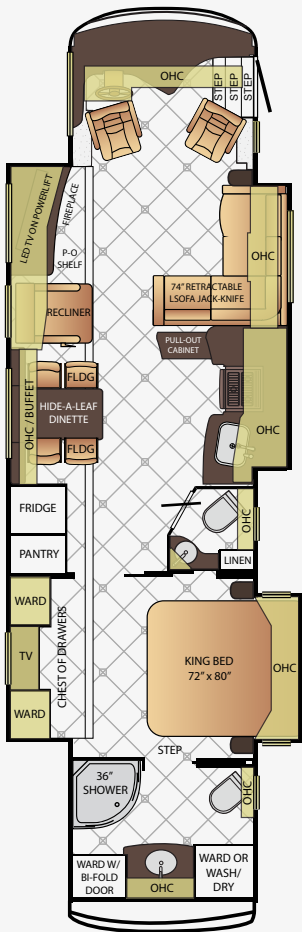


App. Overall Length	37'11"
Width	101.5"
App. Overall Height	12'10"
Interior Width	95.5"
Interior Height	84"
Grey Tank	65 gal.
Sewage Tank	45 gal.
Water Tank	105 gal.
Propane Tank	22 gal.
Furnace	50,000 btu



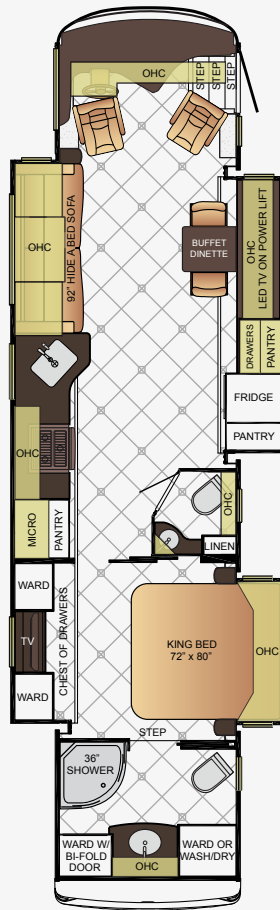
App. Overall Length	40'9"
Width	101.5"
App. Overall Height	12'10"
Interior Width	95.5"
Interior Height	84"
Grey Tank	65 gal.
Sewage Tank	45 gal.
Water Tank	105 gal.
Propane Tank	22 gal.
Furnace	50,000 btu

# FLOOR PLANS



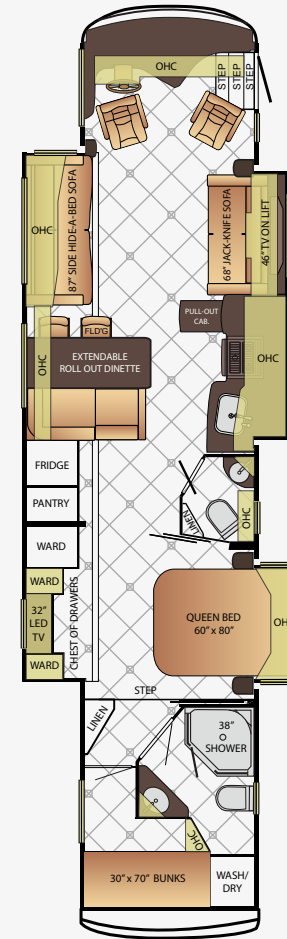
4018

App. Overall Length	40'9"
Width	101.5"
App. Overall Height	12'10"
Interior Width	95.5"
Interior Height	84"
Grey Tank	65 gal.
Sewage Tank	45 gal.
Water Tank	105 gal.
Propane Tank	22 gal.
Furnace	50,000 btu



4041

App. Overall Length	40'9"
Width	101.5"
App. Overall Height	12'10"
Interior Width	95.5"
Interior Height	84"
Grey Tank	65 gal.
Sewage Tank	45 gal.
Water Tank	105 gal.
Propane Tank	22 gal.
Furnace	50,000 btu

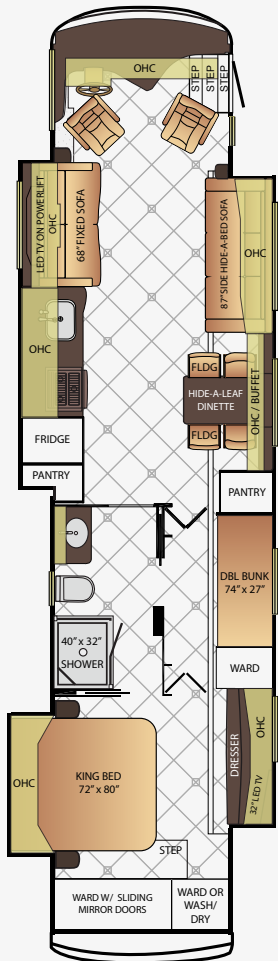


4312

App. Overall Length	43'9"
Width	101.5"
App. Overall Height	13'0"
Interior Width	95.5"
Interior Height	84"
Grey Tank	65 gal.
Sewage Tank	45 gal.
Water Tank	105 gal.
Propane Tank	22 gal.
Furnace	50,000 btu

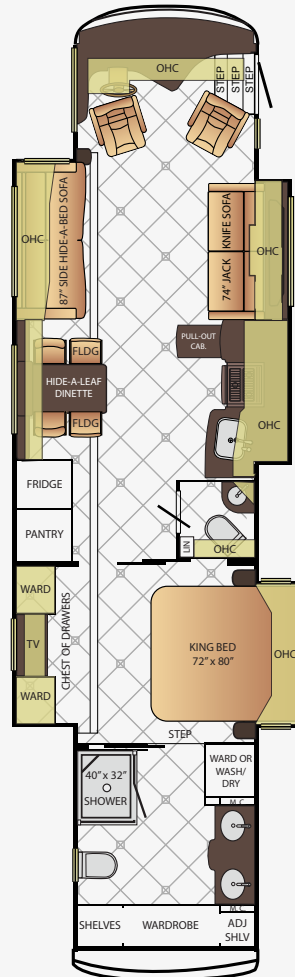


# FLOOR PLANS



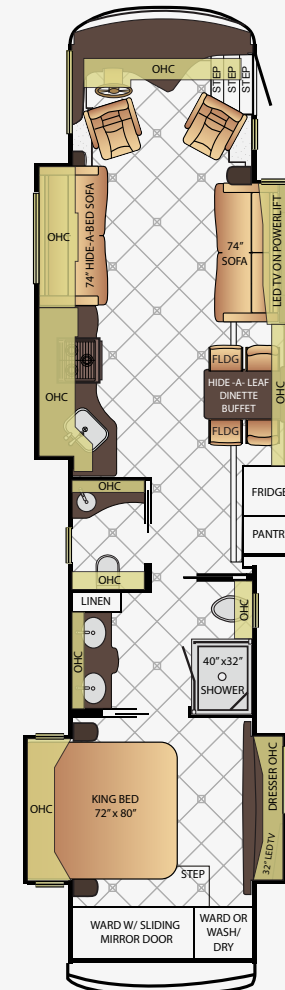
4313

App. Overall Length	43'9"
Width	101.5"
App. Overall Height	13'0"
Interior Width	95.5"
Interior Height	84"
Grey Tank	65 gal.
Sewage Tank	45 gal.
Water Tank	105 gal.
Propane Tank	22 gal.
Furnace	50,000 btu



4369

App. Overall Length	43'9"
Width	101.5"
App. Overall Height	13'0"
Interior Width	95.5"
Interior Height	84"
Grey Tank	65 gal.
Sewage Tank	45 gal.
Water Tank	105 gal.
Propane Tank	22 gal.
Furnace	50,000 btu



4381

App. Overall Length	43'9"
Width	101.5"
App. Overall Height	13'0"
Interior Width	95.5"
Interior Height	84"
Grey Tank	65 gal.
Sewage Tank	45 gal.
Water Tank	105 gal.
Propane Tank	22 gal.
Furnace	50,000 btu

# CONSTRUCTION & CHASSIS SPECIFICATIONS

Dutch Star, a high-performing motor coach, has a Freightliner® Custom Chassis with independent front suspension, an HWH® hydraulic leveling system and added support from Newmar's all-new STAR Foundation. Its tubular truss web frames and substructure beams form a foundation stable enough to allow extensive pass through storage. This allows Dutch Star to expand beyond its

chassis footprint, creating extra living space. Its Cummins® ISL diesel engine produces 450hp, delivering incredible maneuverability and power, even on steep inclines. And if you should ever need it, Freightliner Custom Chassis' roadside assistance program is in place for the entire warranty period.

Floor Plan	Engine HP	Axle Ratio	Fuel Cap.	Wheel Base	Front GAWR*	Rear GAWR*	Tag GAWR*	GVWR*	GCWR*	App. UVW	App. NCC
3726	450	4.78	100 gal.	242	14,600 lb.	24,000 lb.	0	38,600 lb.	48,600 lb.	33,700 lb.	4,900 lb.
3736	450	4.78	100 gal.	242	14,600 lb.	24,000 lb.	0	38,600 lb.	48,600 lb.	33,900 lb.	4,700 lb.
4002	450	4.63	100 gal.	252+TAG	14,600 lb.	20,000 lb.	10,000 lb.	44,600 lb.	59,600 lb.	36,200 lb.	8,400 lb.
4018	450	4.63	100 gal.	252+TAG	14,600 lb.	20,000 lb.	10,000 lb.	44,600 lb.	59,600 lb.	36,500 lb.	8,100 lb.
4041	450	4.63	100 gal.	252+TAG	14,600 lb.	20,000 lb.	10,000 lb.	44,600 lb.	59,600 lb.	36,700 lb.	7,900 lb.
4311	450	4.63	150 gal.	288+TAG	17,000 lb.	20,000 lb.	10,000 lb.	44,600 lb.	59,600 lb.	37,500 lb.	7,100 lb.
4312	450	4.63	150 gal.	288+TAG	17,000 lb.	20,000 lb.	10,000 lb.	44,600 lb.	59,600 lb.	39,200 lb.	5,400 lb.
4313	450	4.63	150 gal.	288+TAG	17,000 lb.	20,000 lb.	10,000 lb.	44,600 lb.	59,600 lb.	39,200 lb.	5,400 lb.
4369	450	4.63	150 gal.	288+TAG	17,000 lb.	20,000 lb.	10,000 lb.	44,600 lb.	59,600 lb.	39,000 lb.	5,600 lb.
4381	450	4.63	150 gal.	288+TAG	17,000 lb.	20,000 lb.	10,000 lb.	44,600 lb.	59,600 lb.	38,500 lb.	6,100 lb.

Lengths, heights, widths and dry weights are approximate. Weight will vary based on optional equipment added to the above base weight.

**GAWR:** Gross Axle Weight Rating is the maximum permissible weight for an axle.

**GVWR:** Gross Vehicle Weight Rating is the maximum permissible weight for a fully loaded motor coach.

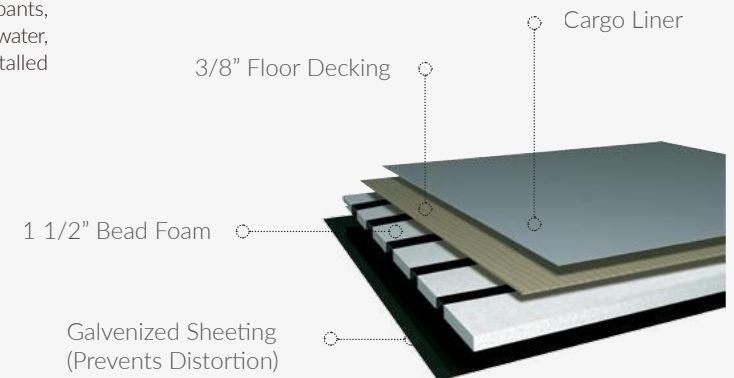
**GCWR:** Gross Combination Weight Rating is the value specified by the manufacturer of the vehicle as the maximum allowable loaded weight of this motor coach and any towed trailer or towed vehicle.

**UVW:** Unloaded Vehicle Weight is the weight of this motor coach as built at the factory with full fuel, engine oil and coolants. Does not include cargo, fresh water, propane gas or dealer-installed accessories.

**NCC:** Net Carrying Capacity is the maximum weight of all occupants, including the driver, personal belongings, food, fresh water, waste water, propane gas, tools, tongue weight of towed vehicle, dealer-installed accessories, etc., that can be carried by the motor coach.

*\*Specifications supplied by the chassis manufacturer.*

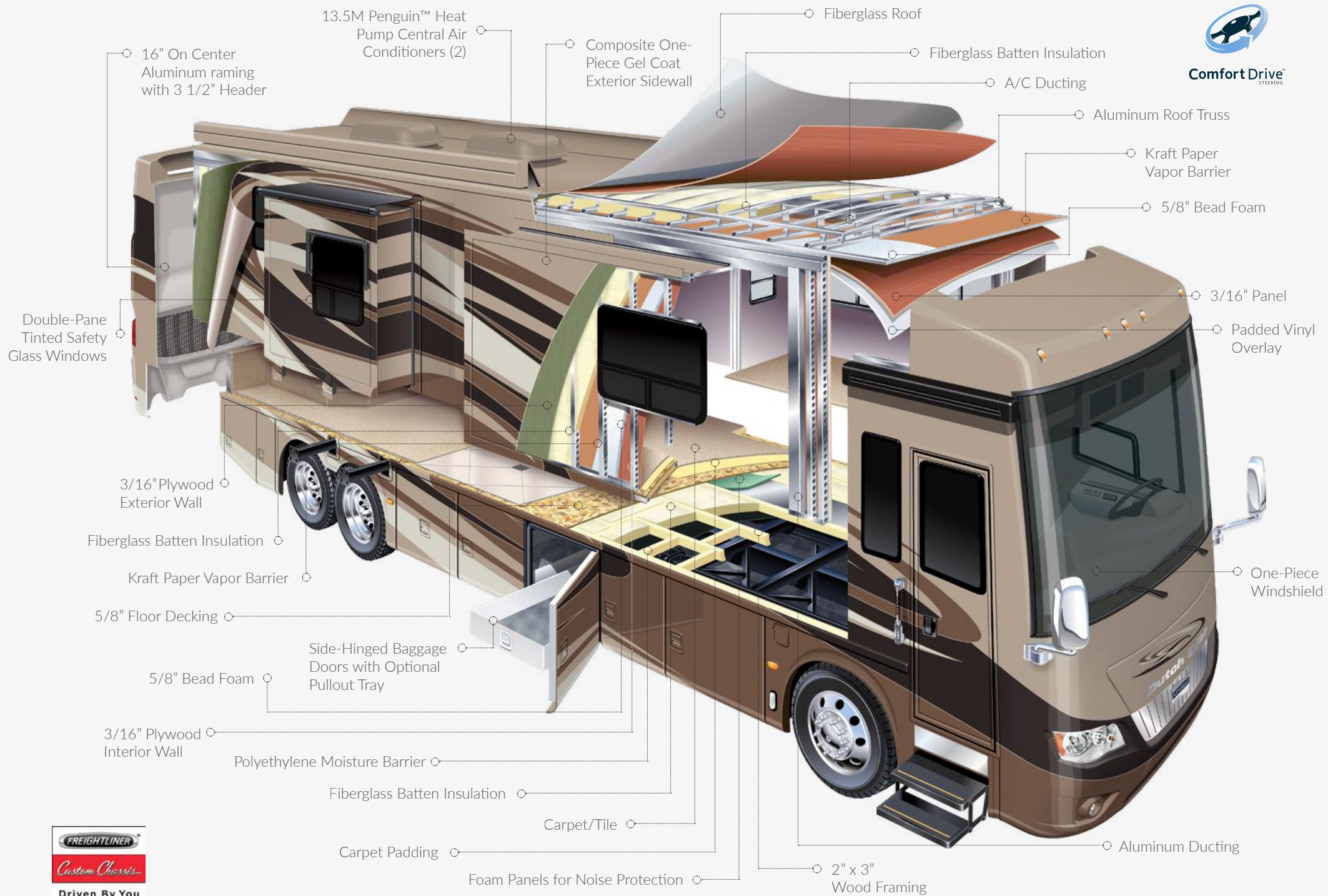
**Dutch Star R-Values:**  
**Roof R-Value = 24**  
**Sidewall R-Value = 11**  
**Floor R-Value = 16**  
**Basement R-Value = 4**







Comfort Drive  
STEERING



# FEATURES & OPTIONS



## CHASSIS FEATURES

- Freightliner® XCR Chassis with 450 HP Cummins® ISL Diesel Engine on 37' Floor Plan
- Freightliner® Passive Steer Tag Axle XCR Chassis with 450 HP Cummins® ISL Diesel Engine on 40'- 43' Floor Plans
- Comfort Drive™ Steering With Adjustable Controls
- Manual Tilt and Telescoping Steering Column with VIP Smart Wheel
- Polished Aluminum Wheels
- Recessed Fuel Fills with Crossover to Fill from Either Side
- Back-Up Alarm
- Anti-Lock Braking System
- In-Dash Electronic Chassis Information Center



## AIR CONDITIONING AND HEATING

- Two 13.5M Penguin™ Heat Pump Air Conditioners
- Hydronic Zone Diesel Heating System with Continuous Hot Water
- Wall-Mounted Heating and Air Conditioning Sensors
- Roof Air Conditioning Drainage System
- Driver and Passenger Dash Overhead Ventilation System

### OPTIONS

- Three 15M Penguin™ Heat Pump Central Air Conditioners, Energy Management System, 10 Kw Onan® Generator on Slides
- Two 15M Penguin™ Heat Pump Air Conditioners
- Electric Heat Installed Below Floor Tile

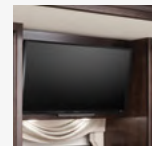


## APPLIANCES

- Recessed Three-Burner Gas Cooktop
- Norcold® 10 Cf. Refrigerator with Brushed Aluminum Front
- Prep for Two-Piece Washer/Dryer
- Convection Microwave
- Fireplace in Living Area\*

### OPTIONS

- 30" Overhead Convection Microwave in Kitchen with a Drawer Placed Below Cooktop
- Dishwasher in a Drawer Located Below Cooktop
- Three Burner Princess Gas Cooktop
- All-Electric Flush Mount Induction Cooktop, Whirlpool® 19.7 Refrigerator, 4 Extra Batteries, 2800-Watt Inverter
- All-Electric Flush Mount Kenyon® Cooktop, Whirlpool® 19.7 Refrigerator, 4 Extra Batteries, 2800-Watt Inverter
- Norcold® 12 Cf. Four-Door Refrigerator with Ice Maker and Water Dispenser
- Whirlpool® 19.7 Refrigerator, 2000-Watt Pure Sine Inverter & 2 Extra Batteries
- Dometic® Freezer on Pullout Tray in Exterior Compartment
- Whirlpool® Two-Piece Washer/Dryer
- Central Vacuum with Tool Kit



## AUDIO, VIDEO AND ACCESSORIES

- Sony® LED TV & Blu-ray/DVD player in Living Area and Bedroom (Sizes Vary Per Floor Plan)
- Sony® 48" LED TV with Televator in Living Area\*
- AM/FM/CD Dash Radio with Harman/JBL® 180-Watt Sound System
- Sony® Surround Sound System with Subwoofer
- Color Rearview Monitor System with Audio
- Two Bedroom Radio Speakers
- Satellite Prep on Roof
- Side-View Cameras That Display On the Rearview Monitor Screen
- Winegard® Digital Crank Up TV Antenna

### OPTIONS

- Sirius® Satellite Radio Capability (Does Not Include Monthly Subscription)
- Dash Radio with Touch Screen Navigation System
- Sony® 40" LED TV in Front Overhead
- 48" Televator TV with Fireplace in Place of Front Overhead TV
- Exterior Entertainment Center in Sidewall with Sony® 40" LED TV and Soundbar
- Exterior Entertainment Center in Storage Compartment with 32" Sony® LED TV and Soundbar
- 11" LCD Flip-Down Monitor/DVD Player with Headphones, One at Each Bunk\*
- Winegard® Digital Power Lift TV Antenna
- Winegard® Automatic Satellite Dish



## CABINETS AND FURNITURE

- Manhattan Maple Cabinetry with Mitered Raised Panel Glazed Doors
- Polished Solid-Surface Countertop in Kitchen, Bathroom & Bedroom
- Flexsteel® Furniture Featuring Strada Leather by Ultrafabrics®, Driver & Queen-Size Passenger Seats
- Six-Way Power Driver/Passenger Seats with Power Lumbar Support and Power Footrest
- Passenger Seat Work Station
- Pullout Pantry Shelves\*
- Dinette with Power Adjusted Table, Bench Seat and Folding Chair on Wheelchair Accessible Floor Plan\*
- Lambright Swivel Wall Hugger Recliner\*
- Power Incline Retracting Bed Base with Sleep Number® Premier Air Mattress\*

### OPTIONS

- Carmel Glazed Cherry, Sable Maple, or Wicker Glazed Maple Cabinetry
- Euro-Booth Dinette and Two Folding Chairs
- Off-Door Side Extenda L Sofa
- Door-Side Hide-a-Bed Sofa, Off-Door Side Two-Swivel Wall Hugger Recliners with Lamp Stand
- Door-Side Bar with Swivel Stools
- Combination Desk/Dinette with Free Standing Hidden Leaf Table, 2 Fixed and 2 Folding Chairs
- Combination Desk/Dinette with Roll Away Table, 2 Fixed and 2 Folding Chairs
- Combination Desk with Buffet Dinette Table, 2 Fixed and 2 Folding Chairs
- Door-Side Fold & Tumble Sofa with Air Mattress
- Door-Side Fold & Tumble Sofa, 48" Televator TV, Off-Door Side Two-Swivel Wall Hugger Recliners
- Off-Door Side Two-Swivel Wall Hugger Recliners with Lamp Stand
- Door-Side Fold & Tumble Sofa, Off-Door Side Two-Swivel Wall Hugger Recliners with Lamp Stand
- Door-Side Jackknife Sofa, Off-Door Side 75" Dinette & 92" Hide-a-Bed Sofa
- Door-Side Power Extenda L Sofa
- Heated Driver & Passenger Seats
- Sofa/Euro-Booth Dinette Ensemble
- Power Flip Up Sofa in Bed Base with Sleep Number® Premier Air Mattress
- Buffet Cabinet with Free Standing Hidden Leaf Table, 2 Fixed and 2 Folding Chairs
- Buffet Cabinet with Buffet Table, 2 Fixed and 2 Folding Chairs
- Flexsteel® Ultralux Leather Extenda Flex Dinette
- Queen Bed



# FEATURES & OPTIONS

Sleep Number® Premier Air Mattress

Power Incline Retracting Bed Base with Sleep Number® Premier Air Mattress



## ELECTRICAL FEATURES

8.0 Kw Cummins® Onan® Diesel Quiet Series Generator

50-Amp Electrical Service with Flexible Cord and Automatic Transfer Switch

12-Volt Auxiliary Receptor on Dashboard

Four 6-Volt House Batteries on Pullout Tray

5-Watt Solar Panel to Charge Chassis Battery

2000-Watt Inverter

Midship Side Turn Signals

LED Lights Recessed in Ceiling and Overhead Cabinets

Accent Lights in Slideout Fascia Trim

Automatic Generator Start on Low Battery or Temperature Setting

Battery Disconnect Switch for House Battery

Emergency Engine Start Switch

Engine Block Heater

Exterior Security Lights

Manually Operated Hold-to-Run Slideout Switch

KIB Backlight Switches for Interior Lights

USB Charger on Dinette & Bedroom Nightstand

LED Lights in Exterior Storage Compartments, Controlled by an Interior Master Switch

### OPTIONS

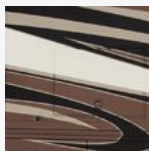
Solar Prep

Recessed Docking Lights

Energy Management System

Power Rewind Reel with 50' Cord

LED Lights Installed Under Door Side Slide-Outs



## EXTERIOR FEATURES

Full-Paint Masterpiece Finish™ with Diamond Shield Protection on Front Cap

Chrome Convex Exterior Mirrors with Remote Control, Defrost and Turn Signals

Rear Protective Tow Guard

Stainless Steel Kick Panel at Entrance Door

Undercoating

Lit Exterior Storage Compartments with Cargo Liner

Automatic Step for Entrance Door

Rear Hitch for Towing Car

Wheelchair Lift on Floor Plan 4311\*

Hydraulic Leveling Jacks

### OPTIONS

Chrome Power Baggage Door Locks, Keyless Entrance Door with Touch Pad & Door Bell

Patio Hammock Package on Door Side Under Awning

Stainless Steel Trim Kit, Chrome Power Baggage Door Locks, Keyless Entrance Door with Touch Pad & Door Bell

Large Storage Tray with Access from One Side or Either Side

Automatic Height-Compensating Step for Entrance Door available only on 43' Floor Plans



## INTERIOR FEATURES

Designer Feature Ceiling

Cathedral Ceiling with Added Height in Rear Bath Floor Plans\*

MCD® Power Shades at Windshield and Manual Shades at Driver & Passenger Side Windows

MCD® Window Shades

Tile Floor in Kitchen, Bathroom, Bedroom and Living Areas

Front Entrance Door with Power Stepwell Cover

Dash Panel Color Coordinated ABS

Custom Bedspread and Accent Pillows

10 Bc Fire Extinguisher, Smoke Detector and Carbon Monoxide Detector

### OPTIONS

Safe Located in Bedroom Wardrobe

MCD® Power Window Shades with Remote Control

Carpet in Bedroom in Place of Tile

Shoe Storage Shelves Recessed into Rear Cap Wardrobe



## PLUMBING AND BATH FEATURES

Demand Water System

Sentrel™ Acrylic Shower Walls with Glass Door\*

Dometic® 321 China Bowl Stool or Macerator Stool\*

Systems Monitor Panel

Exterior Shower

Sewage Holding Tank Rinse

Water Filter for Entire Unit

### OPTIONS

Fold-Down Shower Seat

110-Volt Heat Pads for Holding Tanks

Power Water Hose Reel

Hot Water Line to Generator Area



## CONSTRUCTION FEATURES

Fiberglass Roof with Walkable Decking & Integrated Gutter Rail

Gel Coated Fiberglass Exterior Sidewalls, Front and Rear Caps

Aluminum-Frame Sidewalls & Roof Construction, 16" on Center

5/8" Foam Insulation Laminated in Sidewalls & Ceiling

Mechanical Lock Arms on Non-Flat Floor Slide-outs

Polar Pak R19 Batten Insulation in Roof



## WINDOWS, AWNINGS AND VENTS

One-Piece Tinted Windshield

Frameless Double-Pane Tinted Safety-Glass Windows

Fan-Tastic® Vent with Rain Sensor in Kitchen and Bathroom

Girard® G2000 Power Side Awning with Wind Sensor, Remote Control and LED Lights

Dometic® Slide-out Covers & Power Entrance Door Awning with LED Lights

Skylight Above Shower\*

Driver Side Power Window

Egress Door in Rear Bathroom\*

### OPTIONS

Dometic® 9000 Window Awning

Additional Girard® G2000 Side Awning on Door Side

Bunk Windows\*

Kitchen Window

Two Girard® Nova Side Awnings with Wind Sensor, Remote Control & LED Lights

*\*Check With Dealership On Floor Plan Availability*



## OUR PARTNERS

*Where the Finest Names in Quality and Performance are Along for the Ride*

To ensure that you experience only the best in comfort, control and unsurpassed convenience in our incomparable family of Luxury Coaches, Newmar partners with the most prestigious names in mobile lifestyle, entertainment and technology. These brands

are leaders in their fields and legends in providing customers with new, unsurpassed levels of quality and reliability. Best-in-class performance from names you can trust. At Newmar, that's our difference. And our promise.





## THE MILLER WAY

*Industry-Leading Quality,  
From Our Family to Yours*

For the Miller family, RVs are what we build because RVing is what we love. To us, the RV lifestyle is more than our business – it's our passion. Our customers choose Newmar time and time again because they trust in us, our products and our people.

I myself am proud to own a Dutch Star designed, assembled and backed by artisans, engineers and service specialists who represent the best our industry has to offer. Men and women who have spent an average of 13 years as members of the Newmar family. Without them, The Newmar Difference simply wouldn't exist.

Matt Miller  
*Newmar President, lifelong motor coach enthusiast*

# Dutch Star

## NEWMAR EXPRESS LIMITED WARRANTY

Every Dutch Star Diesel motor coach is backed by Newmar's one-year limited warranty/unlimited miles. Ask your Newmar dealer for details.

## LIMITED FIVE-YEAR STRUCTURAL WARRANTY

If any part of your Newmar recreational vehicle superstructure (which is the steel/aluminum structure of the sidewall, roof or frame) fails to perform properly within five years from the date of purchase because of faulty workmanship or material supplied by Newmar, it will be repaired without charge for either parts or labor by Newmar. This structural warranty is available only to the original purchaser and is non-transferable.

Some features in our literature are optional. Colors and finishes are photographic representations. The actual materials may look different. Prices, specifications and floor plans are subject to change at Newmar's discretion, without prior notice or obligation. Please see your dealer for actual samples and specifications.



WHEN YOU KNOW THE DIFFERENCE <sup>SM</sup>

**LaMESA REC  
VAN**

LaMesaRV.com  
800-496-8778

NEWMAR CORPORATION | 355 N DELAWARE ST | PO BOX 30 | NAPPANEE IN 46550-0030 | 574-773-7791 Fax 574-773-2895

[www.newmarcorp.com](http://www.newmarcorp.com)